

Ahead with

ECCE



12 Practice tests



STUDENT'S BOOK

AHEAD
BOOKS



www.aheadbooks.com
info@aheadbooks.com

Copyright © *Aheadbooks*

Written by: Fiona Aish and Jo Tomlinson
Edited by: Kate Baldus and Mary Marin
Layout: Direct by Design
Picture Credits: www.shutterstock.com
Recording and production: GFS-PRO studio (www.gfs-pro.com)

Printed in September 2022

ISBN

978-618-85450-8-3 (Student's Book)
978-618-85450-7-6 (Teacher's Book & MP3)
978-618-85450-9-0 (Skills Builder)
978-618-86090-0-6 (Student/Skills Pack)

The CD that contains the audio recordings of the listening tasks in MP3 format can be heard on your computer by opening your usual audio player program and then playing the MP3 files. CD can be played on PC and Macintosh.

All rights reserved. No part of this publication may be reproduced, stored in a retrieval system, or transmitted in any form, or by any means, electronic, photocopying, or otherwise, without the prior written permission of Aheadbooks.

CONTENTS

Introduction to Ahead with ECCE	p.1
Test 1	p.4
Test 2	p.25
Test 3	p.43
Test 4	p.61
Test 5	p.79
Test 6	p.97
Test 7	p.115
Test 8	p.133
Test 9	p.151
Test 10	p.169
Test 11	p.187
Test 12	p.205
Speaking tests	p.223

Introduction to Ahead with ECCE

CaMLA ECCE Practice Tests

The Examination for the Certificate of Competency in English (ECCE) is aimed at the high intermediate (B2) level of the Common European Framework of Reference for Languages (CEFR). The ECCE is used for educational and professional purposes by educational institutions, government agencies, and businesses. An ECCE certificate is valid for life.

Language users at this competency level (B2) can:

- Understand the main ideas of complex texts on both concrete and abstract topics, including technical discussions in their field of specialization
- Interact with a degree of fluency and spontaneity that makes regular interaction with native speakers possible without strain for either party
- Produce clear, detailed text on a wide range of subjects and explain a viewpoint on a topical issue, giving the advantages and disadvantages of various options

The ECCE estimates the test taker's true competency by approximating the kinds of tasks that may be encountered in real life.

Test Duration

The test takes a total of 2 hours 45 minutes to complete. The written ECCE part (Grammar, Vocabulary, Reading, Listening, Writing) is 2 hours and 30 minutes. The Speaking is 15 minutes.

Marking Answers

Test takers are given a separate sheet to mark their answers. Another separate sheet is given for the Writing section. The use of a pencil is mandatory for every section.

ECCE Test Format – The test is divided into four sections:

Writing

The ECCE Writing Section offers test takers a choice of two options: an email/letter or an essay. Test takers write one response presenting and supporting their opinion.

Section	Time	Number of questions	Description
Writing	30 minutes	1 task	For the email/letter, a situation and a formal purpose for writing are briefly described, followed by instructions on what to write. For the essay, a proposal or statement is provided, followed by instructions on what to write.

Introduction to Ahead with ECCE

Listening

The ECCE Listening Section reflects language used in real-life situations. The content covers a variety of listening skills:

- Global skills that test comprehension of the entire stimulus, such as the main idea
- Local skills that test a part of the stimulus, such as a detail mentioned by the speaker
- Inferential skills that test comprehension of something that is not explicitly stated in the stimulus, such as drawing a conclusion
- Note-taking is allowed during the listening section but not required.

Section	Time	Number of questions	Description
Listening Part 1	45 minutes	25 questions	Short conversations are each followed by a question. The three answer choices are shown as pictures. Each conversation is played once.
Listening Part 2		20 questions	Single speakers deliver four short talks on different topics, followed by five questions each. Each talk is played twice.

Reading

The ECCE Reading Section includes grammar, vocabulary, and reading parts.

- ECCE grammar and vocabulary items reflect language used in real-life situations. Grammar items consist of one or two sentences containing a blank. From four words or phrases, test takers select the one that is grammatically correct.
- Vocabulary items consist of one sentence containing a blank. From four words or phrases, test takers select the one that has the correct meaning, collocation, or syntactic rules for the sentence.
- The ECCE Reading Section covers a variety of global, local, and inferential reading skills.

Section	Time	Number of questions	Description
Grammar	75 minutes	15	An incomplete sentence is followed by a choice of four words or phrases to complete it.
Vocabulary		14	An incomplete sentence is followed by a choice of four words or phrases to complete it.
Reading Part 1		12	Two informational reading passages of academic or general interest, each followed by six multiple-choice questions.
Reading Part 2		24	Two sets of four thematically related passages based on texts found in real life, such as advertisements, emails, letters, and magazine articles. Each set in Part 2 is followed by twelve multiple-choice questions.

Introduction to Ahead with ECCE

Speaking

The ECCE Speaking Section lets test takers demonstrate their ability to:

- to ask and answer questions
- provide suggestions or recommendations
- present and justify a decision
- discuss a topic in detail

There are four stages in the test which build on each other; as the test progresses, the linguistic and interactional demands become increasingly more challenging.

The test taker participates in a structured, multistage task with one examiner.

Section	Time	Number of questions	Description
Speaking	10 - 15 minutes	4 stages	Stage 1: Introduction and warm-up Stage 2: Test takers find out information about a situation Stage 3: Test takers present their choice about the situation in Stage 2. Stage 4: Test takers answer some questions in the same topic area as the Stage 2 situation.

Test Scoring and Results

Michigan Language Assessment uses scoring models to ensure that test scores are comparable across different administrations and fair to all test takers.

The listening and reading sections of the ECCE are scored by computer at Michigan Language Assessment. Each correct answer adds to the final score for its section; points are not deducted for wrong answers.

The speaking and writing sections are rated using scoring criteria established by Michigan Language Assessment. (See the [ECCE Speaking](#) and [ECCE Writing](#) rating scales.) The speaking section is conducted and assessed by a certified speaking examiner, and the writing section is assessed by at least two certified raters.

A scaled score, ranging from 0 to 1,000, is reported for each section of the test and also averaged to produce an overall score. ECCE test-takers who achieve an overall score of 650 or higher are awarded a Certificate of Competency, and those who achieve an overall score of 840 or higher are awarded a Certificate of Competency with Honors.

ECCE Reporting System Band Scores	
	Scaled Score Per Section
Honors (H)	840–1000
Pass (P)	750–835
Low Pass (LP)	650–745
Borderline Fail (BF)	610–645
Fail (F)	0–605

Test 1





Full Name (PRINT)

Today's Date
(mm/dd/yy)

CENTER		

REGISTRATION					

FORM

0	0	0
1	1	1
2	2	2
3	3	3
4	4	4
5	5	5
6	6	6
7	7	7
8	8	8
9	9	9

0	0	0	0	0	0
1	1	1	1	1	1
2	2	2	2	2	2
3	3	3	3	3	3
4	4	4	4	4	4
5	5	5	5	5	5
6	6	6	6	6	6
7	7	7	7	7	7
8	8	8	8	8	8
9	9	9	9	9	9

A
B
C
D
E
F
G
H

IMPORTANT DIRECTIONS FOR MARKING ANSWERS

- Make heavy black marks that fill the circle completely.
- Cleanly erase any answer you wish to change.
- Make no stray marks on the answer sheet.
- Do not fold or crease the answer sheet.
- The examiner will tell you how to fill in the identification section.

EXAMPLES

WRONG



WRONG



WRONG



RIGHT



TASK

- EMAIL/ LETTER
- ESSAY

DO NOT WRITE IN THIS AREA



Writing Instructions

TIP BOX: ✓ Choose just ONE of the tasks to write about. ✓ Always THINK before you write. Plan your answer and make sure you answer the question. ✓ Grammar and Vocabulary is only ONE part of the marking scheme. How you develop your ideas and connect them, as well as how relevant they are to the question are equally important.

- Choose either Task 1 (Email/Letter) or Task 2 (Essay). Write on only ONE of these tasks.
 - Once you have chosen your task, darken the circle for "Email/Letter" or "Essay" on your writing answer document.
 - You will have 30 minutes to write your answer.
 - Use #2 (soft) pencil only.
 - Use only the lines provided on the writing answer document to complete this section. You should write about one page.
 - Do not write your answer in this booklet.
 - You will not be graded on the appearance of your paper, but your handwriting must be readable.
 - You may use the planning area provided in this booklet, but it will not count toward your score. Write on only ONE of these tasks.
-
- Choose either Task 1 (Email/Letter) or Task 2 (Essay).
 - Write on only ONE of these tasks.
 - You will have 30 minutes to write your answer.

Task 1: Email

The mayor wants to help reduce the traffic in the city center. Some people have suggested banning cars from the center, and the mayor wants to know what residents think of this.

- Write an email to the mayor giving your opinion about this idea. Give reasons to support your opinion.
- Start your email, "Dear Mayor Jones"

Task 2: Essay

Teenagers should focus on their studies, and as such it should be against the law for them to have jobs, even weekend jobs.

- Write an essay outlining whether you agree or disagree with the statement above.
- Include specific reasons and examples to support your opinions.

End of writing test 1



Listening Test | Part 1

ECCE LISTENING & READING ANSWER SHEET

Full Name (PRINT)

Today's Date
(mm/dd/yy)

Signature

CENTER		

REGISTRATION					

LAN	

FORM

0	0	0
1	1	1
2	2	2
3	3	3
4	4	4
5	5	5
6	6	6
7	7	7
8	8	8
9	9	9

0	0	0	0	0	0
1	1	1	1	1	1
2	2	2	2	2	2
3	3	3	3	3	3
4	4	4	4	4	4
5	5	5	5	5	5
6	6	6	6	6	6
7	7	7	7	7	7
8	8	8	8	8	8
9	9	9	9	9	9

0	0
1	1
2	2
3	3
4	4
5	5
6	6
7	7
8	8
9	9

A
B
C
D
E
F
G
H

IMPORTANT DIRECTIONS FOR MARKING ANSWERS

- Make heavy black marks that fill the circle completely.
- Cleanly erase any answer you wish to change.
- Make no stray marks on the answer sheet.
- Do not fold or crease the answer sheet.
- The examiner will tell you how to fill in the identification section.

EXAMPLES

WRONG



WRONG



WRONG



RIGHT



GENDER

- A FEMALE
- B MALE
- C PREFER NOT TO SAY
- D PREFER TO SELF-DESCRIBE:

LISTENING

1.	A	B	C
2.	A	B	C
3.	A	B	C
4.	A	B	C
5.	A	B	C
6.	A	B	C
7.	A	B	C
8.	A	B	C
9.	A	B	C

10.	A	B	C
11.	A	B	C
12.	A	B	C
13.	A	B	C
14.	A	B	C
15.	A	B	C
16.	A	B	C
17.	A	B	C
18.	A	B	C

19.	A	B	C
20.	A	B	C
21.	A	B	C
22.	A	B	C
23.	A	B	C
24.	A	B	C
25.	A	B	C



REGISTRATION

--	--	--	--	--	--

Full Name (PRINT) _____

**L
I
S
T
E
N
I
N
G**

- | | |
|---|---|
| 26. <input type="radio"/> A <input type="radio"/> B <input type="radio"/> C <input type="radio"/> D | 36. <input type="radio"/> A <input type="radio"/> B <input type="radio"/> C <input type="radio"/> D |
| 27. <input type="radio"/> A <input type="radio"/> B <input type="radio"/> C <input type="radio"/> D | 37. <input type="radio"/> A <input type="radio"/> B <input type="radio"/> C <input type="radio"/> D |
| 28. <input type="radio"/> A <input type="radio"/> B <input type="radio"/> C <input type="radio"/> D | 38. <input type="radio"/> A <input type="radio"/> B <input type="radio"/> C <input type="radio"/> D |
| 29. <input type="radio"/> A <input type="radio"/> B <input type="radio"/> C <input type="radio"/> D | 39. <input type="radio"/> A <input type="radio"/> B <input type="radio"/> C <input type="radio"/> D |
| 30. <input type="radio"/> A <input type="radio"/> B <input type="radio"/> C <input type="radio"/> D | 40. <input type="radio"/> A <input type="radio"/> B <input type="radio"/> C <input type="radio"/> D |
| 31. <input type="radio"/> A <input type="radio"/> B <input type="radio"/> C <input type="radio"/> D | 41. <input type="radio"/> A <input type="radio"/> B <input type="radio"/> C <input type="radio"/> D |
| 32. <input type="radio"/> A <input type="radio"/> B <input type="radio"/> C <input type="radio"/> D | 42. <input type="radio"/> A <input type="radio"/> B <input type="radio"/> C <input type="radio"/> D |
| 33. <input type="radio"/> A <input type="radio"/> B <input type="radio"/> C <input type="radio"/> D | 43. <input type="radio"/> A <input type="radio"/> B <input type="radio"/> C <input type="radio"/> D |
| 34. <input type="radio"/> A <input type="radio"/> B <input type="radio"/> C <input type="radio"/> D | 44. <input type="radio"/> A <input type="radio"/> B <input type="radio"/> C <input type="radio"/> D |
| 35. <input type="radio"/> A <input type="radio"/> B <input type="radio"/> C <input type="radio"/> D | 45. <input type="radio"/> A <input type="radio"/> B <input type="radio"/> C <input type="radio"/> D |

**R
E
A
D
I
N
G**

- | | | | |
|---|---|---|--|
| 46. <input type="radio"/> A <input type="radio"/> B <input type="radio"/> C <input type="radio"/> D | 63. <input type="radio"/> A <input type="radio"/> B <input type="radio"/> C <input type="radio"/> D | 79. <input type="radio"/> A <input type="radio"/> B <input type="radio"/> C <input type="radio"/> D | 95. <input type="radio"/> A <input type="radio"/> B <input type="radio"/> C <input type="radio"/> D |
| 47. <input type="radio"/> A <input type="radio"/> B <input type="radio"/> C <input type="radio"/> D | 64. <input type="radio"/> A <input type="radio"/> B <input type="radio"/> C <input type="radio"/> D | 80. <input type="radio"/> A <input type="radio"/> B <input type="radio"/> C <input type="radio"/> D | 96. <input type="radio"/> A <input type="radio"/> B <input type="radio"/> C <input type="radio"/> D |
| 48. <input type="radio"/> A <input type="radio"/> B <input type="radio"/> C <input type="radio"/> D | 65. <input type="radio"/> A <input type="radio"/> B <input type="radio"/> C <input type="radio"/> D | 81. <input type="radio"/> A <input type="radio"/> B <input type="radio"/> C <input type="radio"/> D | 97. <input type="radio"/> A <input type="radio"/> B <input type="radio"/> C <input type="radio"/> D |
| 49. <input type="radio"/> A <input type="radio"/> B <input type="radio"/> C <input type="radio"/> D | 66. <input type="radio"/> A <input type="radio"/> B <input type="radio"/> C <input type="radio"/> D | 82. <input type="radio"/> A <input type="radio"/> B <input type="radio"/> C <input type="radio"/> D | 98. <input type="radio"/> A <input type="radio"/> B <input type="radio"/> C <input type="radio"/> D |
| 50. <input type="radio"/> A <input type="radio"/> B <input type="radio"/> C <input type="radio"/> D | 67. <input type="radio"/> A <input type="radio"/> B <input type="radio"/> C <input type="radio"/> D | 83. <input type="radio"/> A <input type="radio"/> B <input type="radio"/> C <input type="radio"/> D | 99. <input type="radio"/> A <input type="radio"/> B <input type="radio"/> C <input type="radio"/> D |
| 51. <input type="radio"/> A <input type="radio"/> B <input type="radio"/> C <input type="radio"/> D | 68. <input type="radio"/> A <input type="radio"/> B <input type="radio"/> C <input type="radio"/> D | 84. <input type="radio"/> A <input type="radio"/> B <input type="radio"/> C <input type="radio"/> D | 100. <input type="radio"/> A <input type="radio"/> B <input type="radio"/> C <input type="radio"/> D |
| 52. <input type="radio"/> A <input type="radio"/> B <input type="radio"/> C <input type="radio"/> D | 69. <input type="radio"/> A <input type="radio"/> B <input type="radio"/> C <input type="radio"/> D | 85. <input type="radio"/> A <input type="radio"/> B <input type="radio"/> C <input type="radio"/> D | 101. <input type="radio"/> A <input type="radio"/> B <input type="radio"/> C <input type="radio"/> D |
| 53. <input type="radio"/> A <input type="radio"/> B <input type="radio"/> C <input type="radio"/> D | 70. <input type="radio"/> A <input type="radio"/> B <input type="radio"/> C <input type="radio"/> D | 86. <input type="radio"/> A <input type="radio"/> B <input type="radio"/> C <input type="radio"/> D | 102. <input type="radio"/> A <input type="radio"/> B <input type="radio"/> C <input type="radio"/> D |
| 54. <input type="radio"/> A <input type="radio"/> B <input type="radio"/> C <input type="radio"/> D | 71. <input type="radio"/> A <input type="radio"/> B <input type="radio"/> C <input type="radio"/> D | 87. <input type="radio"/> A <input type="radio"/> B <input type="radio"/> C <input type="radio"/> D | 103. <input type="radio"/> A <input type="radio"/> B <input type="radio"/> C <input type="radio"/> D |
| 55. <input type="radio"/> A <input type="radio"/> B <input type="radio"/> C <input type="radio"/> D | 72. <input type="radio"/> A <input type="radio"/> B <input type="radio"/> C <input type="radio"/> D | 88. <input type="radio"/> A <input type="radio"/> B <input type="radio"/> C <input type="radio"/> D | 104. <input type="radio"/> A <input type="radio"/> B <input type="radio"/> C <input type="radio"/> D |
| 56. <input type="radio"/> A <input type="radio"/> B <input type="radio"/> C <input type="radio"/> D | 73. <input type="radio"/> A <input type="radio"/> B <input type="radio"/> C <input type="radio"/> D | 89. <input type="radio"/> A <input type="radio"/> B <input type="radio"/> C <input type="radio"/> D | 105. <input type="radio"/> A <input type="radio"/> B <input type="radio"/> C <input type="radio"/> D |
| 57. <input type="radio"/> A <input type="radio"/> B <input type="radio"/> C <input type="radio"/> D | 74. <input type="radio"/> A <input type="radio"/> B <input type="radio"/> C <input type="radio"/> D | 90. <input type="radio"/> A <input type="radio"/> B <input type="radio"/> C <input type="radio"/> D | 106. <input type="radio"/> A <input type="radio"/> B <input type="radio"/> C <input type="radio"/> D |
| 58. <input type="radio"/> A <input type="radio"/> B <input type="radio"/> C <input type="radio"/> D | 75. <input type="radio"/> A <input type="radio"/> B <input type="radio"/> C <input type="radio"/> D | 91. <input type="radio"/> A <input type="radio"/> B <input type="radio"/> C <input type="radio"/> D | 107. <input type="radio"/> A <input type="radio"/> B <input type="radio"/> C <input type="radio"/> D |
| 59. <input type="radio"/> A <input type="radio"/> B <input type="radio"/> C <input type="radio"/> D | 76. <input type="radio"/> A <input type="radio"/> B <input type="radio"/> C <input type="radio"/> D | 92. <input type="radio"/> A <input type="radio"/> B <input type="radio"/> C <input type="radio"/> D | 108. <input type="radio"/> A <input type="radio"/> B <input type="radio"/> C <input type="radio"/> D |
| 60. <input type="radio"/> A <input type="radio"/> B <input type="radio"/> C <input type="radio"/> D | 77. <input type="radio"/> A <input type="radio"/> B <input type="radio"/> C <input type="radio"/> D | 93. <input type="radio"/> A <input type="radio"/> B <input type="radio"/> C <input type="radio"/> D | 109. <input type="radio"/> A <input type="radio"/> B <input type="radio"/> C <input type="radio"/> D |
| 61. <input type="radio"/> A <input type="radio"/> B <input type="radio"/> C <input type="radio"/> D | 78. <input type="radio"/> A <input type="radio"/> B <input type="radio"/> C <input type="radio"/> D | 94. <input type="radio"/> A <input type="radio"/> B <input type="radio"/> C <input type="radio"/> D | 110. <input type="radio"/> A <input type="radio"/> B <input type="radio"/> C <input type="radio"/> D |
| 62. <input type="radio"/> A <input type="radio"/> B <input type="radio"/> C <input type="radio"/> D | | | |





Listening Test | Part 1

Test 1

You will hear 25 conversations. After each conversation, you will hear a question about it. You will hear each conversation and question ONCE only. The answer choices are shown as pictures. You should choose A, B or C.^{1.1}



	A	B	C
1.			
2.			
3.			
4.			
5.			
6.			



A

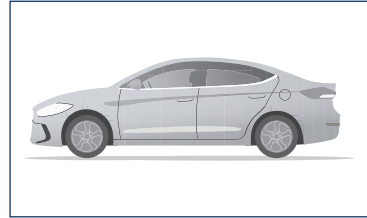
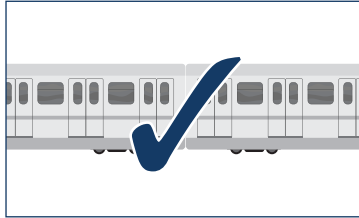
B

C

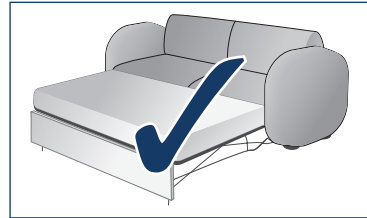
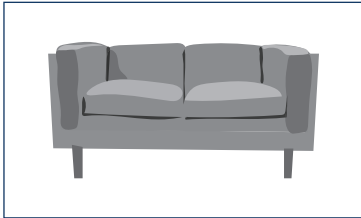
7.



8.



9.



10.



11.



12.





Listening Test | Part 1

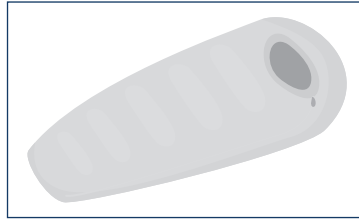
Test 1

A

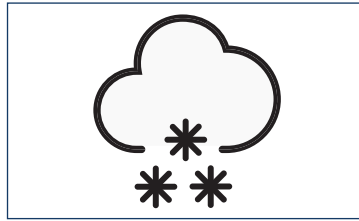
B

C

13.



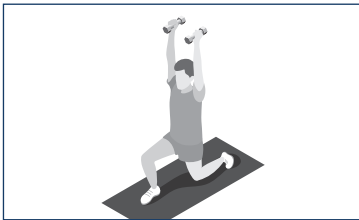
14.



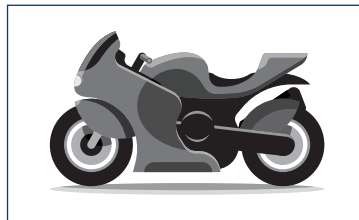
15.



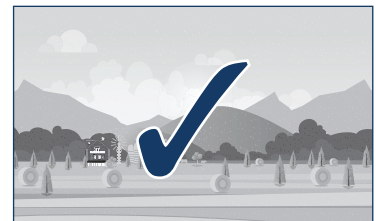
16.



17.



18.



19.



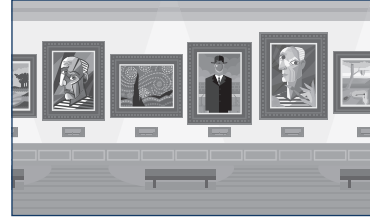


A

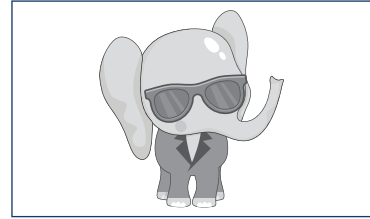
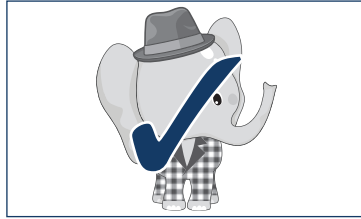
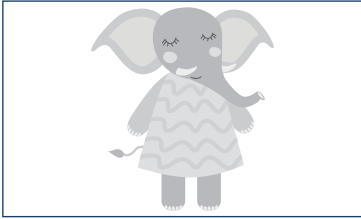
B

C

20.



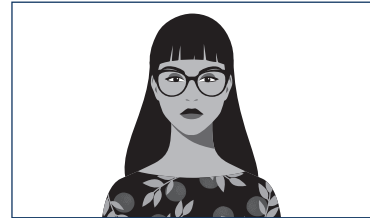
21.



22.



23.



24.



25.



TIP BOX: ✓ Look at the images and think about how to describe them and their differences.
 ✓ You may hear more than one image mentioned in different contexts, then you will hear the question at the end. Think how the options are connected. ✓ You will listen only ONCE.



Listening Test | Part 2

Test 1


You will hear four short talks. After each talk, you will hear five questions.
Before each talk begins, you have time to read the questions below.

You will hear each talk twice. Then you will hear the questions once.

You should choose A, B, C or D.


Now you will hear the first talk. Look at the questions.

Listen to a talk in a library.^{1,2} 

26. Why did the speaker arrange the meeting?
- A. to give new members a tour
 - B. to introduce new members
 - C. to give people the books
 - D. to explain the library system
27. How is the book club different from other libraries?
- A. There are more members.
 - B. Reading time is longer.
 - C. The books are better.
 - D. They meet in the evening.
28. What is true about the library?
- A. It's in a large building.
 - B. It's very popular.
 - C. It has lots of new books.
 - D. It has paper and e-books.
29. What does the speaker say about buying the books?
- A. Local bookstores are expensive.
 - B. It's quicker to order the books online.
 - C. Some are difficult to find in stores.
 - D. The cheapest option is the library.
30. What does the speaker mean when she says:^{1,3} 
- A. When choosing a book, everyone has to agree.
 - B. It's difficult to find books that all members like.
 - C. The book club tries hard to please all its members.
 - D. The system for choosing books is going to change.

Now you will hear the second talk. Look at the questions.


Listen to a manager giving a welcome talk to new employees.^{1,4} 

31. What does the manager say about Media Central?
- A. The training program is great.
 - B. It's a successful company.
 - C. People enjoy working there.
 - D. Customer satisfaction is high.
32. Where can new employees find information about Media Central?
- A. on the company website
 - B. in their information pack
 - C. on their employee tablet
 - D. from their managers
33. How should new employees communicate with their colleagues?
- A. by phone
 - B. by email
 - C. in person
 - D. by chat message
34. What does the speaker mean when he says:^{1,5} 
- A. The company values hard work.
 - B. Staff don't work long hours.
 - C. The company is modern.
 - D. Most staff work from home.
35. What does Media Central want from its employees?
- A. progress
 - B. creativity
 - C. loyalty
 - D. intelligence



Now you will hear the third talk. Look at the questions.

Listen to a presentation about company sales.^{1.6} 

36. Which region has the best sales recently?
 A. Europe
 B. South America
 C. Asia
 D. Canada
37. What causes good sales in some regions?
 A. choice of products
 B. value for money
 C. delivery times
 D. customer service
38. What does the speaker mean when she says:^{1.7} 
 A. They travel long distances.
 B. They give good discounts.
 C. They make a special effort.
 D. They work long hours.
39. How do European customers react to a long delivery time?
 A. They cancel their order.
 B. They complain about it.
 C. They change company.
 D. They give a bad review.
40. What is the main purpose of the presentation?
 A. to explain bad sales figures
 B. to promote the company
 C. to update the employees
 D. to introduce a new system

Now you will hear the fourth talk. Look at the questions.

Listen to a radio announcement about a local event.^{1.8} 

41. Where is the event happening?
 A. on the town's streets
 B. at restaurants and in stores
 C. in the town's park
 D. all over the town
42. According to the speaker, who will open the festival?
 A. the mayor of Redburn
 B. a celebrity chef
 C. a restaurant owner
 D. a local judge
43. What is the Grange Hotel offering?
 A. a half price lunch
 B. a weekend special offer
 C. special menus for children
 D. free coffee with cake
44. Where is most of the festival information?
 A. at the tourist office
 B. on the app
 C. on the website
 D. in leaflets
45. What is the main purpose of the news item?
 A. to advertize local food producers
 B. to recommend specific places to eat
 C. to attract people to the festival
 D. to tell people about the festival schedule

End of Listening Test 1



This section has 15 questions. Each question has only one correct answer.

46. When Pete and Alex were little they _____ fishing with their grandparents on the weekends.
A. were going
B. had gone
C. used to go
D. would have gone
47. Hannah was too tired _____ her homework and decided to do it in the morning.
A. finish
B. finished
C. to finish
D. finishing
48. I think that's the child of the woman _____ down the street.
A. where she lives
B. which is living
C. who lives
D. she lives
49. "Have you seen Gary?"
"Not today, he told me _____ a few days off."
A. he takes
B. that he took
C. he will take
D. he was taking
50. Danny woke up feeling so tired. _____ he had gone to bed earlier, he'd feel okay now.
A. If only
B. If as
C. As if
D. Only if
51. Why is Ron at work today? He's been so ill recently that I don't think he _____.
A. should be working
B. should work
C. must be working
D. must work
52. I can't believe he accused _____ the money from the drawer.
A. that I took
B. me of taking
C. me that I took
D. me to take
53. "Where shall we go for dinner?"
"Let's go to the new Italian restaurant in town, _____?"
A. can we
B. will we
C. shall we
D. let we
54. The new boss is so nice. _____ bring in a cake, but he also bought everyone gifts!
A. Only didn't he
B. Only not he did
C. Not only did he
D. He did not only
55. The bus service is not running _____ the bad weather.
A. even though
B. due to
C. because
D. so that

TIP BOX: ✓ In the reading section, there are also grammar and vocabulary questions.
✓ For grammar, read around the space carefully and try to work out what structure is being tested.
✓ For vocabulary, look at the words surrounding the space to give you clues. ✓ Try to discount any wrong answers. ✓ Remember that the time for this section includes the reading, so don't spend too long on questions you are not sure of. Go back at the end if you need to.



56. The children won the soccer match and they felt very proud of _____.
- A. yourselves
 - B. itself
 - C. ourselves
 - D. themselves
57. The smell from the restaurant kitchen _____ there.
- A. put me off eating
 - B. put me off to eat
 - C. put eat off me
 - D. put off me eating
58. The school would get extra funding _____ they could maintain the high grades of the students.
- A. in spite of
 - B. as long as
 - C. whereas
 - D. as though
59. "Do you know if _____?"
"Yes, it finished about five minutes ago."
- A. is the meeting finishing
 - B. is the meeting finished
 - C. the meeting is finished
 - D. the meeting finishes
60. I can't wait to read the next book in the series. It _____ next month!
- A. will release
 - B. will be released
 - C. is to be released
 - D. is releasing



This section has 14 questions. Each question has only one correct answer.

61. Office jobs aren't for everybody. Some people prefer _____ work like being a mechanic or builder.
A. reflex
B. manual
C. handy
D. staple
62. David got offered the job but he _____ because it involved too much travel.
A. made it up
B. cut it off
C. cleared it up
D. turned it down
63. The school rules _____ students to bring their own food onto campus.
A. forbid
B. refuse
C. exclude
D. abort
64. Carrie had been training for this race for months and was _____ to place in the top 3.
A. sinking
B. breaking
C. crushing
D. dying
65. Harry spent three years in San Diego but he never felt that he _____ there.
A. belonged
B. became
C. matched
D. related
66. If you want to work from home, you need the _____ of your manager.
A. applause
B. admiration
C. approval
D. appeal
67. Many people think natural medicines are a good natural _____ to painkillers.
A. condition
B. fragment
C. excuse
D. alternative
68. The dentist told me to _____ on eating sweets if I want to keep my teeth in good condition.
A. write off
B. cut down
C. store up
D. take care
69. "Do we know who broke the window?"
"Not yet. All the students have _____ doing it."
A. sworn
B. protested
C. denied
D. refused
70. They wrote the sign in big red letters to help it _____ out.
A. hang
B. burst
C. break
D. stand

TIP BOX: ✓ In the reading section, there are also grammar and vocabulary questions.
✓ For grammar, read around the space carefully and try to work out what structure is being tested.
✓ For vocabulary, look at the words surrounding the space to give you clues. ✓ Try to discount any wrong answers. ✓ Remember that the time for this section includes the reading, so don't spend too long on questions you are not sure of. Go back at the end if you need to.



71. Just because a product is expensive, it doesn't _____ mean that it's good quality.
- A. necessarily
- B. evidently
- C. rightly
- D. deliberately
72. "Did you hear that the Scottsboro office is closing?"
"Sure. Everyone knows. It's _____ knowledge."
- A. routine
- B. common
- C. mutual
- D. general
73. The school tried to _____ money for new computers by organizing a festival.
- A. raise
- B. invest
- C. donate
- D. rise
74. "How long can I _____ books from the library for?"
"Four weeks."
- A. lend
- B. obtain
- C. borrow
- D. hire



This passage is about giraffes

Giraffes are a noticeable part of the landscape in many African countries. They attract crowds of admirers in zoos as well. However, until recently almost no scientists had studied giraffe behavior in detail. Perhaps this is because giraffes are quiet, peaceful animals, compared to more dramatic ones such as lions and elephants, which are frequently studied.

All this has changed in the last decade. Now lots of scientists are studying giraffes and they have discovered some fascinating information. For example, female giraffes often become friends and some of these friendships have lasted for over twenty years. Also, mothers become extremely upset when one of their young dies. This behavior is similar to that of elephants.

So, how have scientists managed to find out all this new information? Nowadays there are many more tools to follow and study animals. Helicopters and planes can follow herds of giraffes so it's easy to see how far they travel to find food and water. In addition, modern ways of filming animals have helped understand more about them.

Researchers using expensive night cameras have just discovered some aspects of their lives that they didn't know before. One of these is that giraffes are sometimes active at night and eat in the light of the moon.

There is also a lot of interest in giraffes' blood pressure and how this affects their ability to bend and drink water. This is because it may help doctors better understand aspects of the human body. Clearly, we still have a lot to learn about giraffes.

- 76 quiet, peaceful animals, compared to more dramatic ones such as lions and elephants, which are frequently studied.
- 77 modern ways of filming animals have helped understand more about them.
- 79 Researchers using expensive night cameras have just discovered some aspects of their lives that they didn't know before. One of these is that giraffes are sometimes active at night and eat in the light of the moon.
- 80 their ability to bend and drink water.
75. What is the main purpose of the passage?
A. to show how giraffes and elephants are similar
B. to explain female giraffe behavior
C. to encourage more people to study giraffes
D. to describe scientific research on giraffes
76. According to the passage, why were there so few giraffe studies?
A. The public aren't interested in them.
B. Their territory is very large.
C. Scientists focus on other animals.
D. It's difficult to record their behavior.
77. What has enabled scientists to learn more about giraffes?
A. more money for research
B. better research techniques
C. improved technology
D. international transportation
78. What has recent research revealed about giraffes?
A. what they do at night
B. the food they prefer
C. the distances they travel
D. how much water they need
79. In the fifth sentence of paragraph 3, what does **they** refer to?
A. cameras
B. giraffes
C. researchers
D. lives
80. According to the author, what other aspect of giraffes are scientists interested in?
A. how their body moves
B. the food they eat
C. the places they live
D. how they breed



This passage is about movie locations

Have you ever watched a movie and been so amazed by the setting that you want to go there yourself? Well, you're not alone. Many people imagine themselves in those places, and often

82 spend a lot of money getting there, leading to a big increase in visitor numbers.

An example is the always busy train station, Kings Cross, in London. Since it became the station where Harry Potter started his trip to magic school, kids started flooding there to get their

83 photos taken. So much so that now there is

84 a special platform area next to the Harry Potter store for people to imagine they are part of the story and take their prized souvenir photos.

Some locations go a step further than that and set up tours to attract more tourists. One such example is the Jurassic Park tours in Hawaii, which can take you to many of the locations seen in the movie. Unfortunately, the chances of seeing a dinosaur are slim, but the incredible natural beauty of the locations more than makes up for it.

In a few instances, a movie location can make a big difference to an area. Take, Almeria in

86 southern Spain. This forgotten area shot to fame for its stunning desert landscape and became a key movie location for famous Westerns throughout the 1960s and 70s. This helped the local economy, and now it hosts two small theme parks that celebrate the Wild West, despite being over 6000 miles from the true Wild West!

81. What is this passage mainly about?
- A. How movie locations have used their fame.
B. The famous film locations that people can visit.
C. How being a movie location can change a place.
D. The pros and cons of being a movie location.
82. What does the author say about movie locations in paragraph 1?
- A. They attract tourists.
B. They get too busy.
C. They're expensive.
D. They're profitable.
83. What do most children want to take away from their trip to Kings Cross station?
- A. a souvenir from the store
B. a photo of themselves
C. a copy of one of the books
D. a picture of Harry Potter
84. In the first sentence of paragraph 3, what does **that** refer to?
- A. taking photos
B. creating a special area
C. attracting visitors
D. being part of the story
85. In the last sentence of paragraph 3, what is the meaning of **makes up for**?
- A. replaces
B. apologises for
C. highlights
D. improves on
86. What does the author say about Almeria before films were made there?
- A. It wasn't seen as important.
B. It didn't have a good economy.
C. It didn't attract many people.
D. It wasn't an attractive place.



A

Getting in shape just became a whole lot easier!

The Park Run organization has added Newington Park to its growing list of venues. Like all the events they hold, the idea is simple and effective; just turn up on Saturday morning at 9.00am and run or walk five kilometers. Recently local residents have been complaining about the lack of sports clubs and facilities in the neighborhood so they should be delighted by this announcement.

87 Park Run is all about helping communities and relies on a network of volunteers to ensure the events happen regularly. For participants there is no pressure and it's not about running fast or winning. It's about going at your own pace and trying to get in shape little by little. This is probably why the organization has had such success. So, why not sign up and join the largest running club in the world.

B

RunnersAdvice.com



The best thing I ever did was to get a professional fitting for my running shoes at Sprinters, the sports store in the mall.

89

The whole experience was amazing. First of all, I talked to an assistant about my running schedule, any recent injuries and the brand of running shoe I usually buy. Then I had to run on the running machine for about 30 seconds. One of the assistants recorded it. Then they explained my running style and the type of shoes that would be best for me.

90

The process took about fifteen minutes. I recommend that you make an appointment because the service is really popular these days.

C

Improve your performance with a *Run Technic* watch

Whether you're a professional runner or new to the sport, *Run Technics* has a watch to suit your requirements.

We work with engineers and specialist manufacturers to design watches that measure a range of things. From heart rate and distance to breathing and speed, they give you the information you need.

92

Fill out an online survey about your preferences to find out which watch would be perfect for you. With *Run Technics*, you can analyze and improve your performance – check out the app or download your run data to any smart phone. Run Technics watches are great for anyone looking to prepare for marathons or long-distance events.

91

D

Advice from a professional runner

When you're starting out, do not overestimate your running ability as you could injure yourself. As an inexperienced runner, you should be running short intervals of a few minutes followed by short periods of walking. As you improve your abilities, you'll be able to lengthen the running times and shorten the walking times. Within a month or so, if you are sticking to a training schedule, you should be able to manage 5 kilometers fairly easily.

93

It's a good idea to spend some time stretching after your runs but definitely make sure you include rest days in your training schedule. These are essential because your muscles need time to repair themselves. This is the key to how you become a better runner.

95, 96



The following questions refer to section A.

87. Why do people join Park Run?
 A. to get advice on running
 B. to improve their health
 C. to compete in running races
 D. to make friends in the community
88. In the third sentence of paragraph 2, what word could replace **pace**?
 A. level
 B. step
 C. time
 D. speed

The following questions refer to section B.

89. What is the purpose of section B?
 A. to review a machine
 B. to describe a service
 C. to advertise a product
 D. to recommend a store
90. What did the store assistant do?
 A. analyzed the customer's running style
 B. gave advice about avoiding injuries
 C. sold the customer some shoes
 D. compared the different shoe brands

The following questions refer to section C.

91. What is the best way to choose a RunTechnic watch?
 A. speak to an assistant in store
 B. answer some questions online
 C. try on different styles in store
 D. read about the products online
92. In the third sentence of paragraph 1, what does **they** refer to?
 A. watches
 B. engineers
 C. requirements
 D. manufacturers

The following questions refer to section D.

93. Which group of people is section D for?
 A. professional runners
 B. beginner runners
 C. trainers of runners
 D. experienced runners
94. In the last sentence of paragraph 1, what does **sticking to** mean?
 A. designing
 B. changing
 C. following
 D. assessing
95. According to the author, what must new runners include in their training program?
 A. stretching
 B. walking
 C. gym sessions
 D. rest days
96. In the second sentence of paragraph 2, what does **these** refer to?
 A. muscles
 B. runs
 C. rest days
 D. kilometers

The following questions refer to two or more sections.

97. Which texts contain information about running specific distances?
 A. B and C
 B. B, C and D
 C. A, C and D
 D. C and D
98. What information is in all four texts?
 A. the importance of getting a trainer
 B. how running can make you healthier
 C. products for improving running techniques
 D. ideas for becoming a better runner



A

HURLEY'S DEPARTMENT STORE

COMING SOON!

**Great news, Scottsville!
Hurley's is coming to town!**

Enjoy all the benefits of big city shopping right here on your doorstep! We'll be having a GRAND OPENING on Saturday, 1st June.

Doors will open at 8am, and for one day only, everything is 10% off!

Hurley's, the department store for your everything, every day.

Clothing • Homewares • Pharmacy • Garden products
224 Western Avenue, Scottsville

**Open every day from 8am to 10pm.
Come and see us!**

99

100

109

B

TOO EARLY FOR A HURLEY?

Chain department store Hurley's has announced it will be opening in the town center, to mixed reactions. The chain, which has over 150 stores throughout the US, will be opening what will be Scottsville's very first department store.

Hurley's will bring over 100 much needed jobs to the town, and many say it will make shopping a lot more convenient and are looking forward to an increased range of goods. However, while some people see this as a sign of great progress for the town, others aren't so sure.

Local businesses however have a different opinion. They're worried that their small businesses will suffer and that their customers will go elsewhere. Protests were made to the local town council, but this hasn't stopped the development.

102

101

C

Reader's comment:

I read your article and to be honest, I have little sympathy with the small store owners in town. I understand they need to make a living, but many of their goods are overpriced. I believe a lot of younger residents, like me, shop at online stores if we possibly can. It's cheaper, there's great choice and things are delivered to my door. Yet, store owners don't protest about that... because there's nothing they can do!

Hurley's will be a breath of fresh air for the town. I think it will make a nice day out for local residents like me and give us all much-needed convenience that we don't have right now. For example, the local stores all shut at 5pm, which is the same time most people leave work. At last, we'll be able to shop after work. I can't believe it's taken until now to happen.

In my opinion, if Hurley's can give them some competition, then I look forward to it!

Sam

103

105
109

D

Dear Councilor Keaton,

I am writing to you to raise my objection to the development of the Hurley's department store in Scottsville. This kind of store will be totally out of place in our town.

This town has a natural charm and an old-fashioned, slow place. It is because of this very slow way of life that Scottsville is so special and a place that people want to visit from miles away. Adding in a huge modern store will ruin our way of life here.

I believe you, as the councilor for the town, have the right to stop this development. I hope that you do so and keep Scottsville the beautiful place it is now. Please don't let our town be ruined by big business like this!

Kind regards,
Jean Palmer
Scottsville Resident

106

108
107



The following questions refer to section A.

99. What is the purpose of section A?
- A. to give information about a town
 - B. to advertise a sale at a store
 - C. to tell people about new products
 - D. to inform people about an event
100. What products are NOT available at Hurley's?
- A. food
 - B. medicine
 - C. furniture
 - D. plants

The following questions refer to section B.

101. What does the passage say about the new department store?
- A. Not everyone is excited about it.
 - B. It will help local businesses.
 - C. People are delighted with it.
 - D. It will bring more shoppers to the town.
102. According to the passage, what will be a benefit of the department store?
- A. more employment
 - B. more time for shopping
 - C. more visitors to Scottsville
 - D. more space for parking

The following questions refer to section C.

103. In section C, what is the author's opinion of the shops currently available?
- A. Their goods are low quality.
 - B. They are too expensive.
 - C. There is greater choice.
 - D. They are convenient.
104. In the first sentence of paragraph 2, what does a **breath of fresh air** mean?
- A. something new and exciting
 - B. a terrible suggestion
 - C. something to worry about
 - D. a reason to celebrate

105. In the last sentence, what does **them** refer to?

- A. online stores
- B. local residents
- C. local stores
- D. most people

The following questions refer to section D.

106. What is the main purpose of section D?
- A. to criticize a person
 - B. to make a complaint
 - C. to demand a change
 - D. to defend a proposal
107. According to the author, why do people visit Scottsville?
- A. to visit the local stores
 - B. to see the architecture
 - C. to experience the atmosphere
 - D. to learn about history
108. How does the author describe where she lives?
- A. delicate
 - B. elegant
 - C. appealing
 - D. genuine

The following questions refer to two or more sections.

109. Which piece of information in section A is the author of section C happy about?
- A. the location
 - B. the closing time
 - C. the discount
 - D. the products
110. What sections contain negative views of Hurley's?
- A. B and C
 - B. C and D
 - C. B, C and D
 - D. B and D

End of reading test 1